

Inazawa City

Flooding Hazard Map

Fill in emergency contacts.

Name (family, school, workplace, etc.)	Phone number	Name (family, school, workplace, etc.)	Phone number

Check the Flood Hazard Map

Where can I get information during a flood?



Is my house going to be okay?



Inazawa City INAPPY
Inazawa City Hall
Public Works/Danger Management
TEL.0587-32-1111

Issued April 2021

Fill in "Our Disaster Prevention Information"!



In case you are required to evacuate due to a flood caused by heavy rain, deciding in advance when and what you will do can help you take action without panicking. Fill in this page and check "Our Disaster Prevention Information" again as needed.

Our home flood water depth (Circle the appropriate shade from the map on the reverse)

less than 0.5m	0.5m to 3.0m	3.0m to 5.0m	5.0m to less than 10.0m

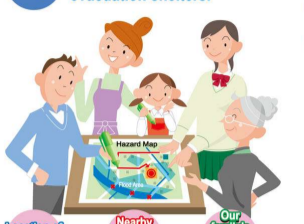
Step 1 Check the risks of a disaster that could happen to your family.

Check the map on the reverse and at the bottom right.

Dangerous locations near our home (Circle dangerous locations near your home) (Fill in other things you can think of)

Projected Flood Zone (flood flow)	Projected Flood Zone (bank erosion)	Other

Step 2 Check the location of nearby evacuation shelters.



Nearest evacuation shelter (Fill in and double check)

Evacuation shelter name	Contact	Things to be careful about

Nearest water level observatory (Fill in and double check)

Nearest observatory	River name	Observatory name	Things to be aware of
Kiso river observatory	Kiso river	Okoshi water level observatory Sobue water level observatory	

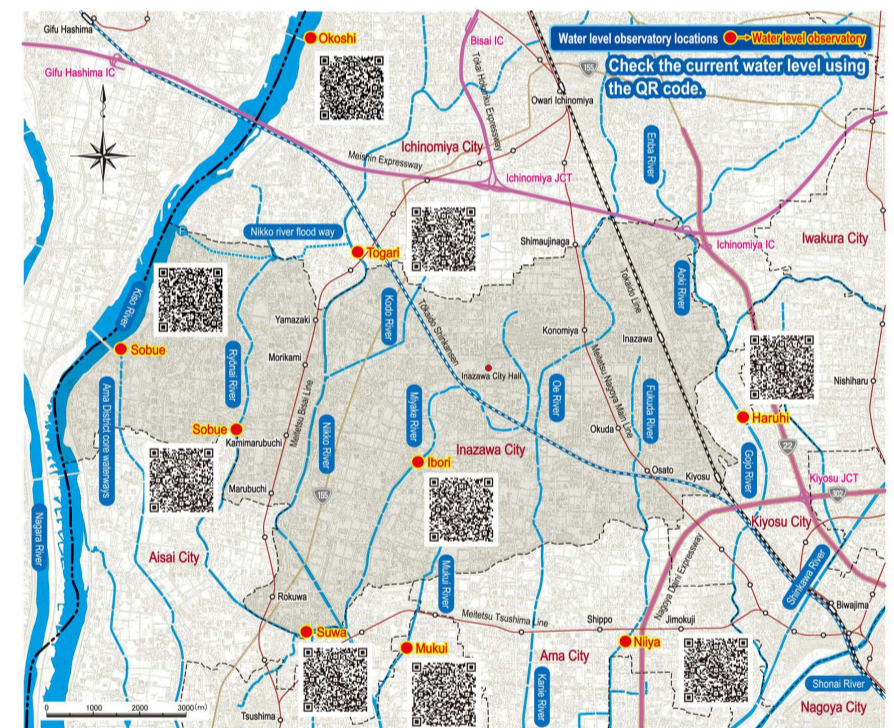
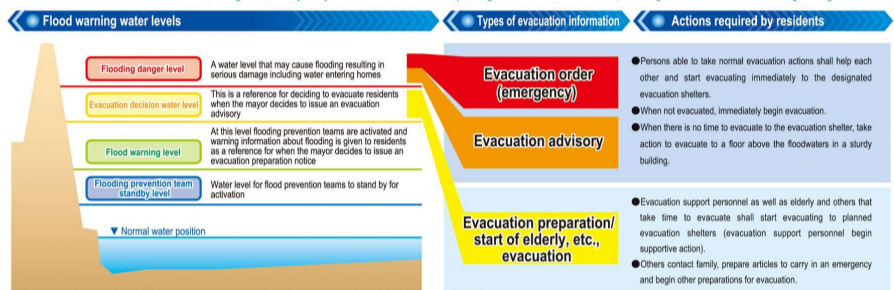


Flood warning water levels and evacuation information during floods



When there is higher risk of personal injury in a disaster, the city will issue evacuation information based on the degree of emergency. Areas needing evacuation will be determined and ordered so all citizens must take appropriate evacuation action based on that information. Depending on the disaster, do not wait for information from the city but gather information for yourself and take immediate evacuation action when you feel in danger of harm. Note that there are conditions* that evacuating may be a greater danger to life. In this case it may be safer to move to a safe indoor location (secure indoor safety).

* Conditions that threaten lives: ▶At night or extremely heavy rainfall can make it difficult to spot dangers on the evacuation route ▶Flooding above the knee ▶Fast flowing flooding of about 20cm



Top Websites	Aichi Prefecture River Disaster Prevention Information Website	Kiso River Upstream River Office Website	Shonai River Office Website
	https://www.kasen-aichi.jp/	https://www.cbr.mlit.go.jp/kiso/yo/	https://www.cbr.mlit.go.jp/shonai/

How to receive and obtain information during floods



Communication of flood warnings and evacuation advisories

Access with a cell phone, smart phone, computer or other digital method

Inazawa City Website

Evacuation and disaster information is provided here.

<http://www.city.inazawa.aichi.jp/>

Inazawa City SNS

Evacuation and disaster information is provided in a timely manner by SNS as well. You can also find out useful event and lifestyle information. Friend us on LINE. Follow us on Twitter or Facebook.

Emergency email

When a disaster occurs or seems likely to occur, Inazawa City will send disaster prevention information by email. In addition to disaster prevention, you can get Patonet Aichi and weather information. Access the registration site using the URL or QR code and sign up.

<https://service.sugumail.com/inazawa/>

Access without a cell phone, smart phone, computer or other digital method

Broadcast Disaster Prevention Wireless

Emergency information and disaster related information can be sent wirelessly to speakers installed in 53 locations including the roofs of elementary and junior high schools to ensure rapid communication.

City Public Relations Car

Audio disaster information is played from loudspeakers on city public relations vehicles, fire departments and fire department vehicles including information about emergencies and disasters as part of Inazawa City's regional disaster prevention efforts.

Television (digital broadcast)

Information is provided by various forms of mass media including digital broadcasts (L alert). We are working to provide detailed information based on our agreements in times of disaster.

Warning level



Directives including evacuation advisories use new warning levels in addition to the evacuation advisory, evacuation order (emergency) and other kinds of evacuation information that have been used until now.

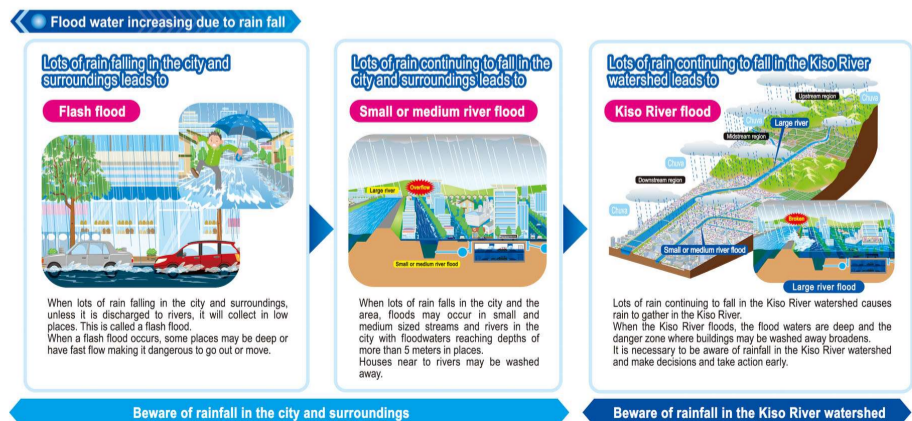
Disaster prevention weather information	Action to take	Evacuation information, etc.	Information from the Japan Meteorological Agency (example)
Warning level 5	Disaster has already occurred. Take the best action to protect life.	[Disaster Information] Issued by Inazawa City	Flood Information Heavy Rain Special Information, etc.
Warning level 4	There is extremely high possibility of a disaster occurring. Immediately leave dangerous locations and evacuate to an evacuation shelter. When it is considered dangerous to move to the evacuation shelter, evacuate to a safe location nearby or in your residence.	[Evacuation Advisory] [Evacuation Order (Emergency)] Issued by Inazawa City	Flooding Danger Information Landslide Disaster Warning Alert, etc.
Warning level 3	Persons requiring time to evacuate (elderly, persons with disabilities, infants, etc.) and their supporters should evacuate. Other persons should prepare to evacuate.	[Evacuation Preparation, Start of Evacuation of Elderly, etc.] Issued by Inazawa City	Flooding Warning Alarm Information Flood Information, etc.
Warning level 2	Prepare to evacuate and check the evacuation action using the hazard map.	[Flood Warning, Heavy Rain Warning, etc.] Issued by the Japan Meteorological Agency	Flood Warning Heavy Rain Warning, etc.
Warning level 1	Let's increase our preparedness for disaster.	[Early Warning Information] Issued by the Japan Meteorological Agency	Early Warning Information

* In addition to these various kinds of notification, the city may decide to issue evacuation notices. The evacuation notice may not occur necessarily at the same level as the disaster prevention information. Furthermore, each type of notification may not be issued in order from warning level 1 to 5.
* At warning level 4, an evacuation order (emergency) is issued in case of emergencies based on local conditions or to urge evacuation again and is not always issued. As soon as an evacuation advisory is issued, evacuate immediately without waiting for the evacuation order (emergency).

What will happen if the Kiso River floods?



When lots of rain falls in the city and the area, floods may occur in small and medium sized streams and rivers in the city. When lots of rain falls continuously in the Kiso River watershed (including the mountains north of the city) a major flood could occur at the Kiso River.



The map on the right shows the results of a simulation of an expected maximum rainfall in the Kiso River basin (a once in 1000 years level of rainfall). [Kiso River basin: Flood prediction published by national authorities in December 2016 total 2 days rainfall 527mm]

